

2019 - 20

ÜRÜN KATALOĐU  
PRODUCT CATALOGUE



**MIKSAN**<sup>®</sup>

*Hızlı Bağlama Sistemleri*

MIKSAN bir **ER-EL** markasıdır.

# MİKSAN®

## Hızlı Bağlama Sistemleri

MİKSAN bir ER-EL markasıdır.

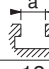
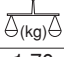


30 yıldır ülkemizde ve Yurtdışında kalıp bağlama elemanları üreticisi olarak sektöre hizmet veren MİKSAN Hızlı Bağlama Sistemleri firması 15.Ekim.2019 tarihi itibariyle satın alınarak ER-EL Kalıp Bağlama ve İşleme Sistemleri firmamız bünyesine katılmıştır.

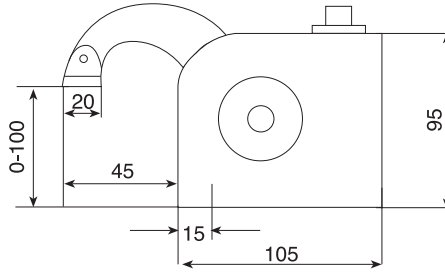
ER-EL markası olan MİKSAN ürünleri; firmamız kalite ve güvencesiyle hizmet vermeye devam edecektir.

*MIKSAN Fast Coupling Systems company which has been serving to the sector as a manufacturer of mold fasteners in our country and abroad for 30 years has been purchased as of 15th of October, 2019 and ER-EL Mold Clamping and Processing Systems has joined our company.*

*MIKSAN products which are ER-EL brand; Our company will continue to serve with quality and assurance.*

Referans Nr.		Sıkma Kuvveti Clamping Force	
1168-MB101112	12	1600	1.70
1168-MB101114	14	1600	1.70
1168-MB101116	16	1600	1.70
1168-MB101118	18	1600	1.70
1168-MB101120	20	1600	1.70

Ürün Nr. 1168 Kombine Bağlama Pabucu  
Product Nr. 1168 Combined Clamp

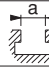
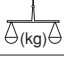


Genişlik / Width 40 mm.

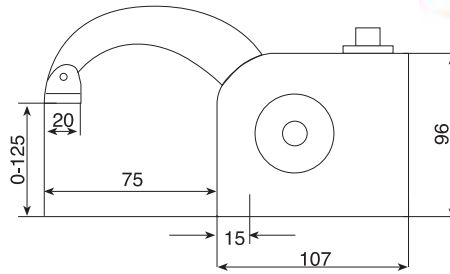
## Kombine Bağlama Pabucu

Combined Clamp



Referans Nr.		Sıkma Kuvveti Clamping Force	
1168-MBU103112	12	1600	1.80
1168-MBU103114	14	1600	1.80
1168-MBU103116	16	1600	1.80
1168-MBU103118	18	1600	1.80
1168-MBU103120	20	1600	1.80

Ürün Nr. 1168 Kombine Bağlama Pabucu  
Product Nr. 1168 Combined Clamp



Genişlik / Width 40 mm.

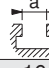

## Kombine Bağlama Pabucu

Combined Clamp

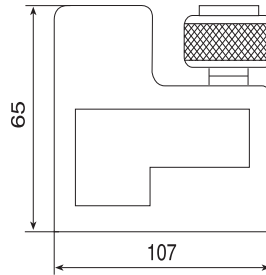


## Kombine Bağlama Pabucu Alt Destek

Combined Clamp Bottom Support

Referans Nr.		
1168-MK1021	16	1.80

Ürün Nr. 1168 Kombine Bağlama Pabucu Alt Destek  
Product Nr. 1168 Combined Clamp Bottom Support

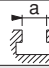



Genişlik / Width 40 mm.

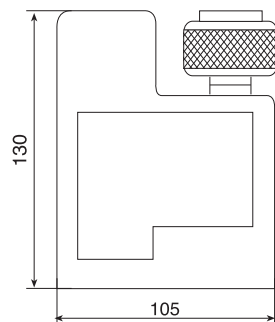


## Kombine Bağlama Pabucu Alt Destek

Combined Clamp Bottom Support

Referans Nr.		
1168-MK1022	16	1.10

Ürün Nr. 1168 Kombine Bağlama Pabucu Alt Destek  
Product Nr. 1168 Combined Clamp Bottom Support



Genişlik / Width 40 mm.

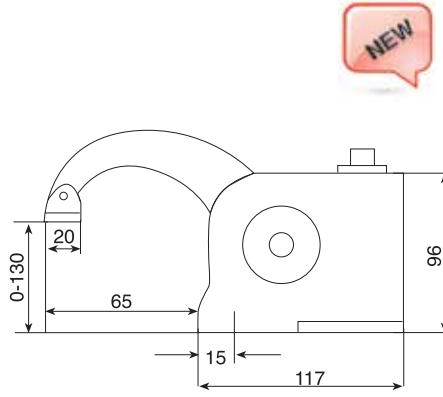


Uygulama Örneği  
Example Application



Referans Nr.	a	Sıkma Kuvveti Clamping Force	(kg)
1168-MFB204112	12	1600	1.70
1168-MFB204114	14	1600	1.70
1168-MFB204116	16	1600	1.70
1168-MFB204118	18	1600	1.70
1168-MFB204120	20	1600	1.70

Ürün Nr. 1168 Kombine Bağlama Pabucu  
Product Nr. 1168 Combined Clamp



Genişlik / Width 40 mm.

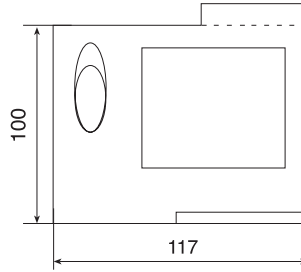


## Kombine Bağlama Pabucu Alt Destek

Combined Clamp Bottom Support

Referans Nr.	a	Sıkma Kuvveti Clamping Force	(kg)
1168-MFK204212	12	1600	0.80
1168-MFK204214	14	1600	0.80
1168-MFK204216	16	1600	0.80
1168-MFK204218	18	1600	0.80
1168-MFK204220	20	1600	0.80

Ürün Nr. 1168 Kombine Bağlama Pabucu  
Product Nr. 1168 Combined Clamp



Genişlik / Width 40 mm.



Uygulama Örneği  
Example Application

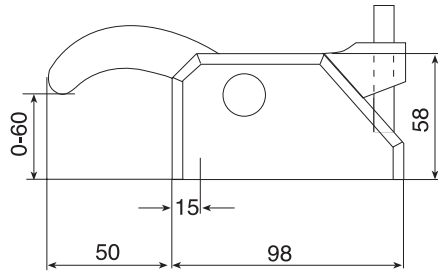


## Kombine Bağlama Pabucu

Combined Clamp

Referans Nr.	a	Sıkma Kuvveti Clamping Force	(kg)
1168-MEP501116	16	5000	2.80
1168-MEP501118	18	5000	2.80
1168-MEP501120	20	5000	2.80
1168-MEP501124	24	5000	2.80

Ürün Nr. 1168 Kombine Bağlama Pabucu  
Product Nr. 1168 Combined Clamp



Genişlik / Width 72 mm.

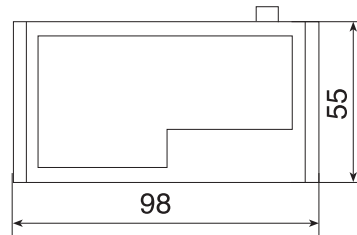


## Kombine Bağlama Pabucu Alt Destek

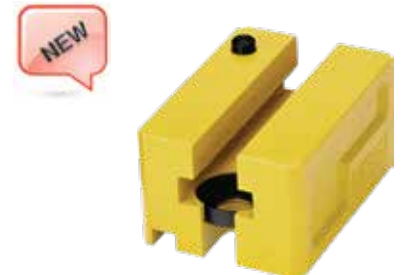
Combined Clamp Bottom Support

Referans Nr.	a	(kg)
1168-MPK5022	18	0.90

Ürün Nr. 1168 Kombine Bağlama Pabucu Alt Destek  
Product Nr. 1168 Combined Clamp Bottom Support

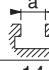
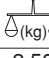


Genişlik / Width 72 mm.



Uygulama Örneği  
Example Application



Referans Nr.		Sıkma Kuvveti Clamping Force	
1168-MP601214	14	2200	2.50
1168-MP601216	16	2200	2.50
1168-MP601218	18	2200	2.50
1168-MP601220	20	2200	2.50

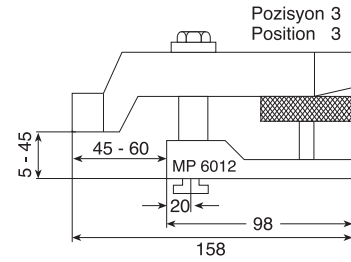
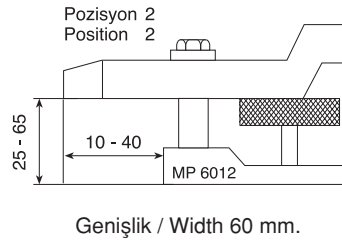
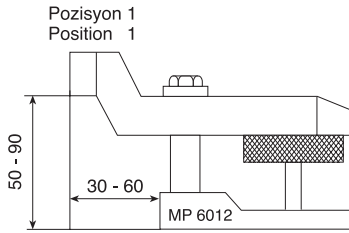


### Ürün Nr. 1168 Kombine Bağlama Pabucu

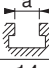
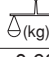
- Pabucun çift taraflı kullanım özelliği; kendi içinde bulunan yükseltici desteği ile kısıtlı alanlarda kullanım kolaylığı sağlar.

### Product Nr. 1168 Combined Clamp

- Double-sided usage of the clamp and its stepped lifter provides using advantage in restricted areas



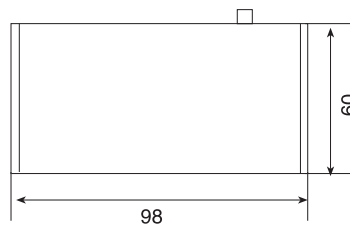
## Kombine Bağlama Pabucu Alt Destek

Referans Nr.		
1168-MY602114	14	0.60
1168-MY602116	16	0.60
1168-MY602118	18	0.60
1168-MY602120	20	0.60

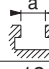

### Ürün Nr. 1168 Kombine Bağlama Pabucu Alt Destek Product Nr. 1168 Combined Clamp Bottom Support



Uygulama Örneği  
Example Application



Genişlik / Width 58 mm.

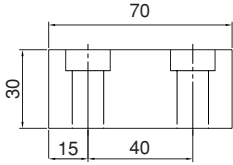
Referans Nr.		Sıkma Kuvveti Clamping Force	
2070-MBS701212	12	2500	3.14
2070-MBS701214	14	2500	3.14
2070-MBS701216	16	2500	3.14
2070-MBS701218	18	2500	3.14
2070-MBS701220	20	2500	3.14

### Ürün Nr. 2070 Yandan Bağlama Set

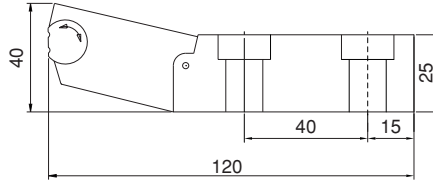
- Mafsallı tasarımıyla düz olmayan yüzeylerde dahi mevcut yüzey şeklini alarak emniyetli bağlama yapar.

### Product Nr. 2070 Side Wrench Set

- With its articulated design, it makes safe bonding even on uneven surfaces by taking the existing surface shape.

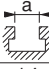
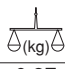


Genişlik / Width 40 mm.



Genişlik / Width 40 mm.



Referans Nr.		
2070-MS701114	14	0.87
2070-MS701116	16	0.87
2070-MS701118	18	0.87
2070-MS701120	20	0.87

### Ürün Nr. 2070 Yandan Bağlama Gövde

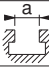

- Mafsallı tasarımıyla düz olmayan yüzeylerde dahi mevcut yüzey şeklini alarak emniyetli bağlama yapar.

### Product Nr. 2070 Side Press Body

- With its articulated design, it makes safe bonding even on uneven surfaces by taking the existing surface shape.

## Yandan Bağlama Gövde



Referans Nr.		
2070-MD702114	14	0.65
2070-MD702116	16	0.65
2070-MD702118	18	0.65
2070-MD702120	20	0.65

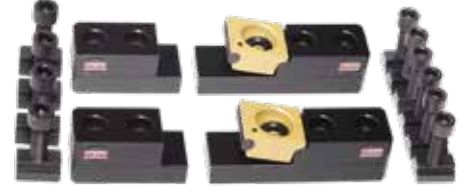
### Ürün Nr. 2070 Yandan Bağlama Dayama

### Product Nr. 2070 Side Press Stopper

## Yandan Bağlama Dayama



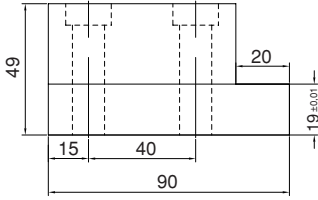
Referans Nr.	a	Sıkma Kuvveti Clamping Force	(kg)
2070-MBS801112	12	2500	6.15
2070-MBS801114	14	2500	6.15
2070-MBS801116	16	2500	6.15
2070-MBS801118	18	2500	6.15
2070-MBS801120	20	2500	6.15

**Ürün Nr. 2070 Yandan Bağlama (Paralelli) Set**

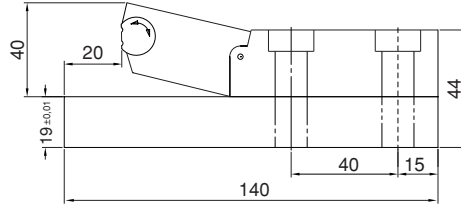
- Mafsallı tasarımıyla düz olmayan yüzeylerde dahi mevcut yüzey şeklini alarak emniyetli bağlama yapar.

**Product Nr. 2070 Side Wrench Set (With Parallel)**

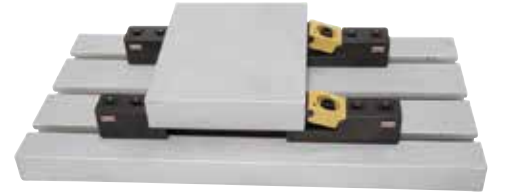
- With its articulated design, it makes safe bonding even on uneven surfaces by taking the existing surface shape.



Genişlik / Width 40 mm.



Genişlik / Width 40 mm.

**Yandan Bağlama Gövde**

## Side Press Body

Referans Nr.	a	(kg)
2070-MS801214	14	1.86
2070-MS801216	16	1.86
2070-MS801218	18	1.86
2070-MS801220	20	1.86

**Ürün Nr. 2070 Yandan Bağlama Gövde**

- Mafsallı tasarımıyla düz olmayan yüzeylerde dahi mevcut yüzey şeklini alarak emniyetli bağlama yapar.

**Product Nr. 2070 Side Press Body**

- With its articulated design, it makes safe bonding even on uneven surfaces by taking the existing surface shape.

**Yandan Bağlama Dayama**

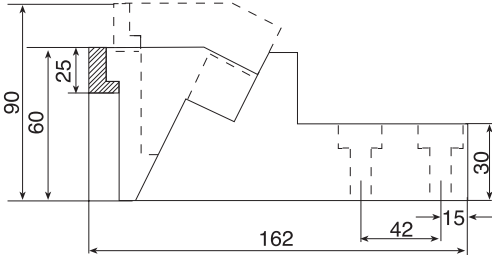
## Side Press Stopper

Referans Nr.	a	(kg)
2070-MD802214	14	1.18
2070-MD802216	16	1.18
2070-MD802218	18	1.18
2070-MD802220	20	1.18

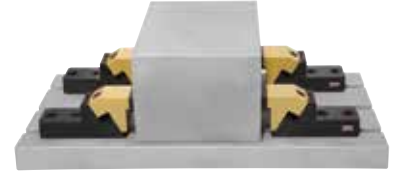
**Ürün Nr. 2070 Yandan Bağlama Dayama****Product Nr. 2070 Side Press Stopper**

Referans Nr.	a	Sıkma Kuvveti Clamping Force	(kg)
2105-MYB404114	14	3600	2.80
2105-MYB404116	16	3600	2.80
2105-MYB404118	18	3600	2.80
2105-MYB404120	20	3600	2.80
2105-MYB404122	22	3600	2.80
2105-MYB404124	24	3600	2.80

Ürün Nr. 2105 Blok Yandan Bağlama  
Product Nr. 2105 Block Side Press

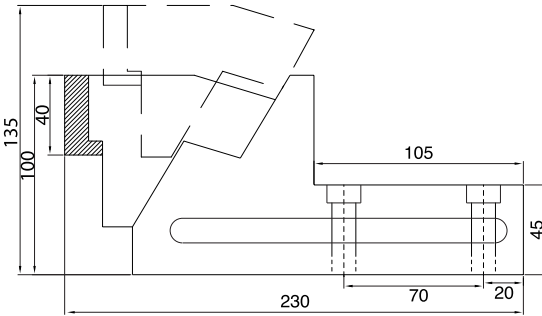


Genişlik / Width 54 mm.



Referans Nr.	a	Sıkma Kuvveti Clamping Force	(kg)
2105-MYB901120	20	6000	6.85
2105-MYB901122	22	6000	6.85
2105-MYB901124	24	6000	6.85
2105-MYB901128	28	6000	6.85

Ürün Nr. 2105 Blok Yandan Bağlama  
Product Nr. 2105 Block Side Press

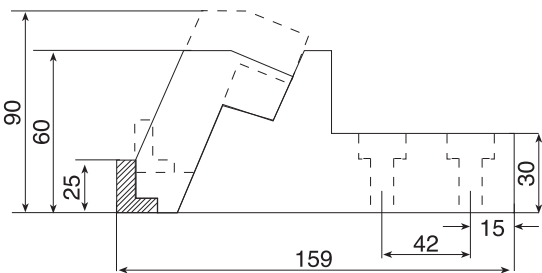


Genişlik / Width 68 mm.



Referans Nr.	a	Sıkma Kuvveti Clamping Force	(kg)
2105-MYB303114	14	3600	2.80
2105-MYB303116	16	3600	2.80
2105-MYB303118	18	3600	2.80
2105-MYB303120	20	3600	2.80
2105-MYB303122	22	3600	2.80
2105-MYB303124	24	3600	2.80

Ürün Nr. 2105 Blok Yandan Bağlama  
Product Nr. 2105 Block Side Press



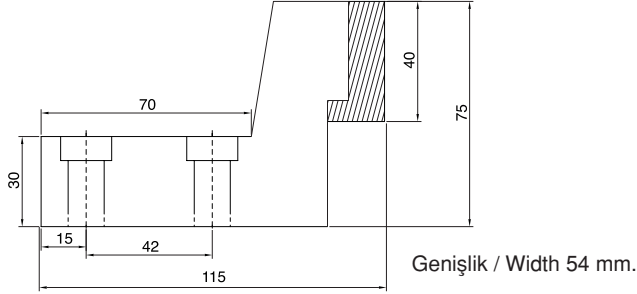
Genişlik / Width 54 mm.





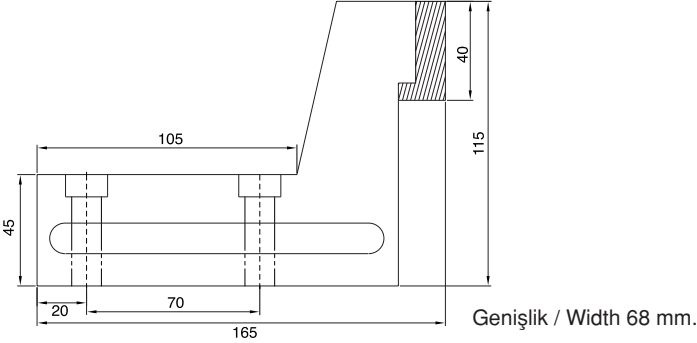
Referans Nr.	a	(kg)
2105-MD404214	14	1.86
2105-MD404216	16	1.86
2105-MD404218	18	1.86
2105-MD404220	20	1.86
2105-MD404222	22	1.86
2105-MD404224	24	1.86

Ürün Nr. 2105 Blok Yandan Bağlama Dayaması  
Product Nr. 2105 Block Stopper Side Press



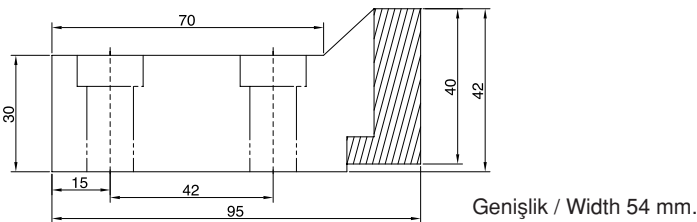
Referans Nr.	a	(kg)
2105-MD902120	20	4.50
2105-MD902122	22	4.50
2105-MD902124	24	4.50
2105-MD902128	28	4.50

Ürün Nr. 2105 Blok Yandan Bağlama Dayaması  
Product Nr. 2105 Block Stopper Side Press



Referans Nr.	a	(kg)
2105-MD303214	14	1.17
2105-MD303216	16	1.17
2105-MD303218	18	1.17
2105-MD303220	20	1.17
2105-MD303222	22	1.17
2105-MD303224	24	1.17

Ürün Nr. 2105 Blok Yandan Bağlama Dayaması  
Product Nr. 2105 Block Stopper Side Press



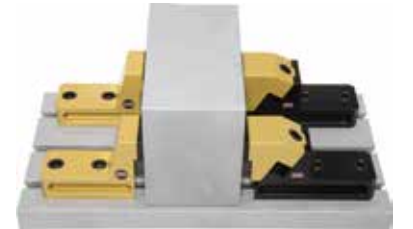
## Blok Yandan Bağlama Dayaması

Block Stopper Side Press



## Blok Yandan Bağlama Dayaması

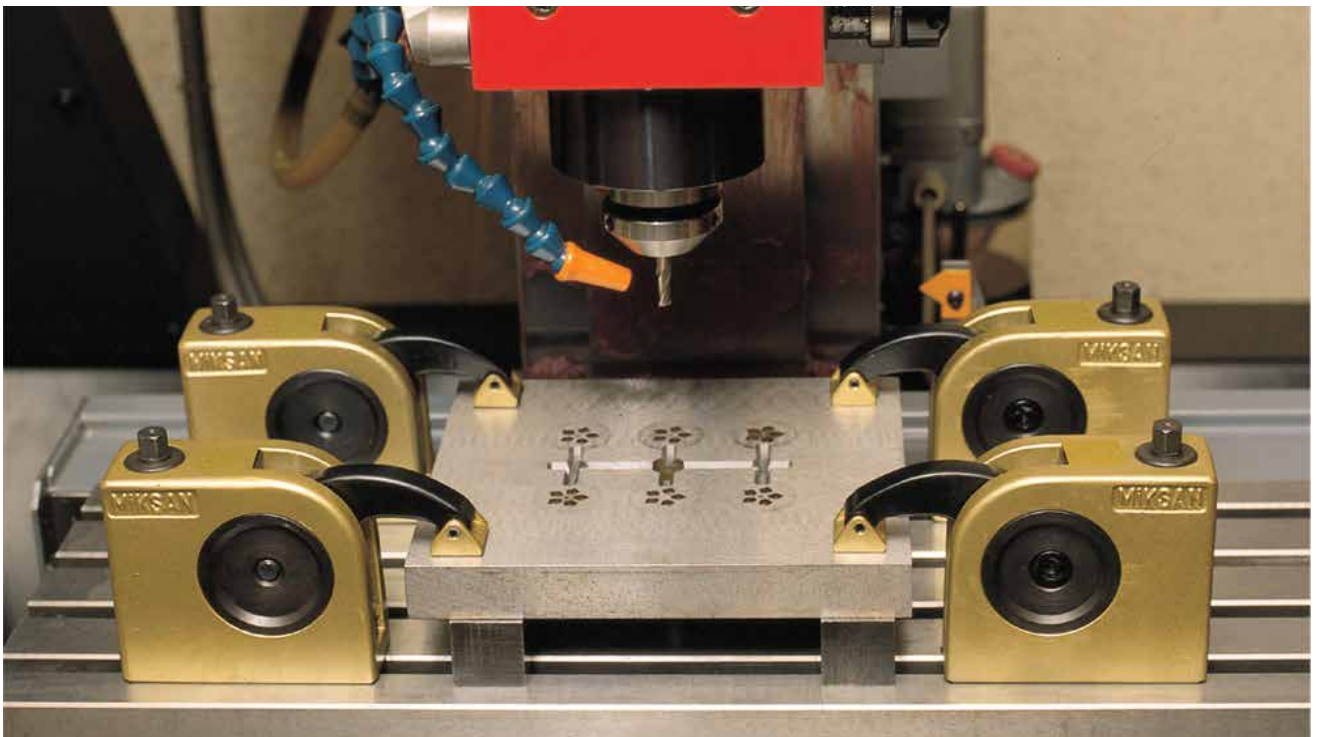
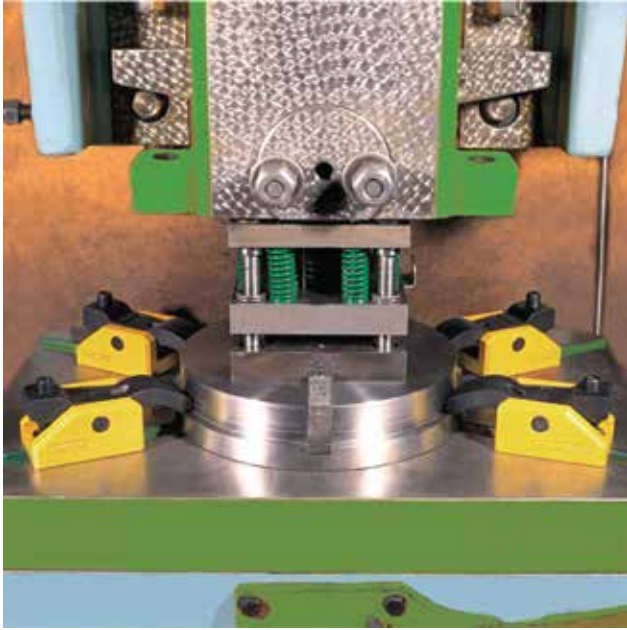
Block Stopper Side Press



## Blok Yandan Bağlama Dayaması

Block Stopper Side Press









[www.er-el.com.tr](http://www.er-el.com.tr)



[www.miksan.com](http://www.miksan.com)

**ER-EL®**

**ER-EL MAKİNA YEDEK PARÇA İML. SAN. ve TİC. LTD. ŞTİ.**


Çerkeşli OSB Mah. İMES 3 Biv. No:14 Dilovası - Kocaeli  
Tel.: (+90) 262 502 11 60 Pbx Fax: (+90) 262 502 11 59

info@er-el.com.tr [www.er-el.com.tr](http://www.er-el.com.tr)  
info@miksan.com [www.miksan.com](http://www.miksan.com)

MİKSAN bir **ER-EL** markasıdır.

 [twitter.com/ERELkalip](https://twitter.com/ERELkalip)

 [facebook.com/erelmakina](https://facebook.com/erelmakina)  
[facebook.com/erelmaschine](https://facebook.com/erelmaschine)

 [instagram.com/erelkalip](https://instagram.com/erelkalip)

 [linkedin.com/in/er-el-makina](https://linkedin.com/in/er-el-makina)

 [plus.google.com/u/0/+ER-ELMAKINA](https://plus.google.com/u/0/+ER-ELMAKINA)

 [youtube.com/erelkalip](https://youtube.com/erelkalip)